

C.R.E.W. Luxembourg

Compliance Reporting Estate & Wealth

“A dedicated solution tailored to the operational needs of Alternative Funds and Family Offices.”

About us.

“At **C.R.E.W. LUXEMBOURG**, we empower family offices and small investment funds by orchestrating the structures, governance, and expertise that transform capital into lasting value.”



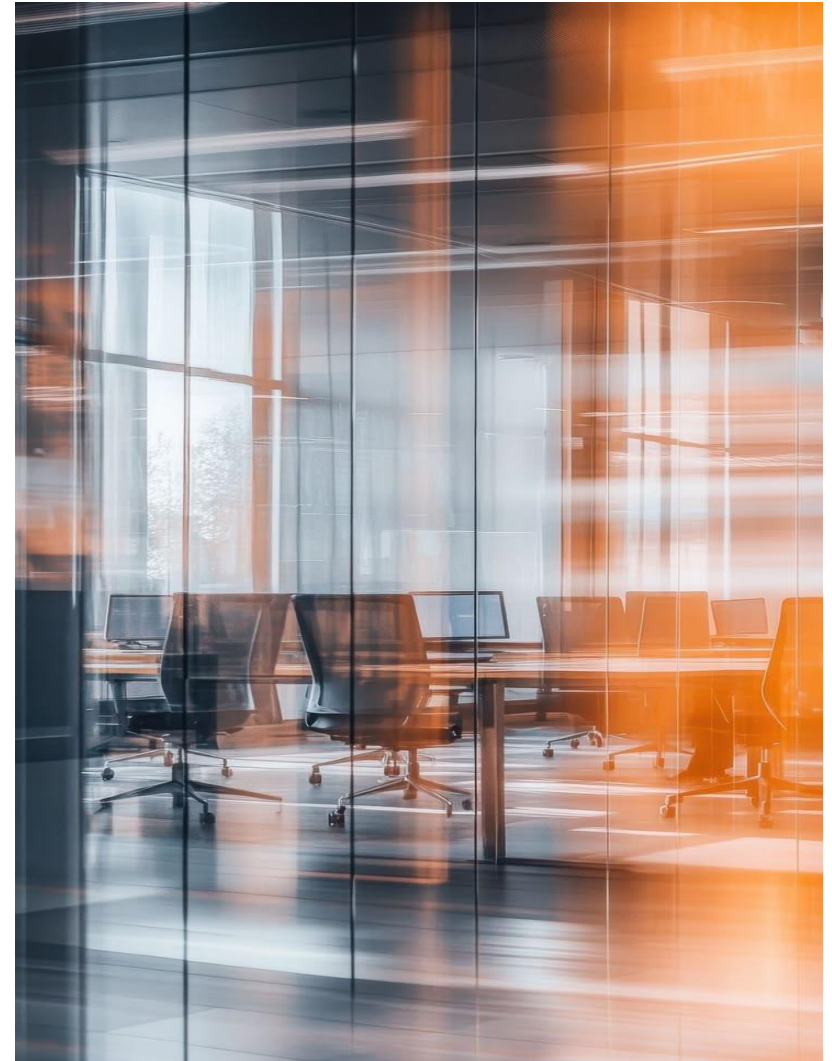
Linking our Strengths & Values for a joint success

**Welcome on « C.R.E.W. »
your gateway to seamless fiduciary services.**

In an environment where legal, tax, and regulatory frameworks continue to grow in complexity, structuring and managing investments requires more than technical expertise. It requires a trusted partner able to coordinate every dimension of a structure with precision, discretion, and strategic foresight.

At **C.R.E.W.**, we provide independent chartered accounting and fiduciary expertise to **family offices, private investors, and emerging fund managers** establishing and operating investment structures in Luxembourg.

From initial structuring to ongoing administration and reporting, we support our clients throughout the entire investment lifecycle — whether for **family investment platforms, private club deals, or boutique fund structures** — delivering the rigor, clarity, and reliability that sophisticated investors expect in Luxembourg.



Who we are:

A sponsored multi-skilled Management Team, with a solid workforce

A DYNAMIC CORE MANAGEMENT TEAM

ACCOUNTING PRACTICE

- Two former PwC and Oaktree Partners with more than 12 years combined experience.
- One senior Partner with 25 years of experience in Luxembourg.
- Governing a wide range of technical aspects including Lux GAAP, securitization vehicle, CLN.
- Ability to connect with Foreign Accounting Teams as we are fluent in English, German and French.

TAX, LEGAL AND REGULATORY

- Solid relationship with TS&P as tax and legal advisors, we coordinate excellently on international structuring and cross-border transactions.
- Strong knowledge of the alternative investment fund industry, including Private Equity, credit, real estate. Our family offices also benefit from Private Wealth structuring including Estate Planning.

COMPLIANCE, TRANSACTIONAL SUPPORT, GOVERNANCE

- Collaboration with compliance leaders in Luxembourg via a specialized law firm Birtel Avocats
- Extensive experience in all the daily services required to administer companies with the highest care in our duties.
- Privileged relationship with a notary firm to facilitate and expedite corporate administration

SOLID ALLIANCES WITH OUTSTANDING PARTNERS TO REASSURE OUR CLIENTS

SPONSORED BY A REPUTABLE FAMILY OFFICE & INVESTMENT FUND

- Multi countries covered.
- Sponsored by a renowned French family
- Close relationship to special situations & real estate funds

BACKED-UP WITH A STRONG WORKFORCE

- **Exclusive and close partnership** with a renowned fiduciary practice.
- Access to an administrative center located in Oran.
- **20 people** as of date.
- **Very low turnover**
- **Empowered and knowledgeable team, agile and able to adapt to every client needs.**

Access to a Team of Experts via a Single Entry Point



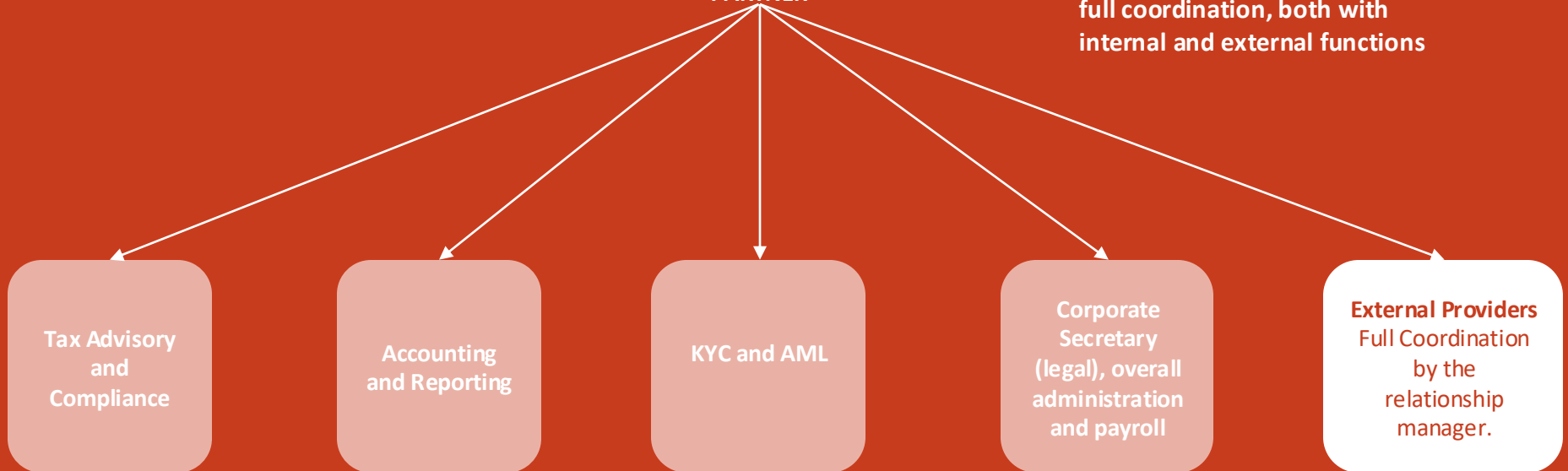
YOU

You can reach out to the same person (or back-up) for any kind of request you would have, anytime.



YOUR DEDICATED RELATIONSHIP PARTNER

The relationship partner ensures a full coordination, both with internal and external functions



Tax Advisory and Compliance

Accounting and Reporting

KYC and AML

Corporate Secretary (legal), overall administration and payroll

External Providers Full Coordination by the relationship manager.

We offer a Comprehensive Solution

ACCOUNTING

- Bookkeeping
- Analytical accounting
- Gaap-to-Gaap conversions
- Review of internal accounting
- Financial statement preparation
- Preparation of interim financial information
- BCL reporting

TAX

- Coordination for sophisticated Tax Advisory and Transfer Pricing
- Coordination of international tax advisory
- VAT compliance
- Direct tax returns
- Withholding tax returns
- Subscription tax returns
- Specific direct, indirect, and personal tax requests
- FATCA reports

DOMICILIATION, TRANSACTIONAL AND DAILY MANAGEMENT

- Registered office
- Daily management of corporate affairs (amongst other: mailing, payments, liaising with third-parties, administrations)
- Management of e-mail addresses

DIRECTORSHIP

- Substance of companies ensured via personal mandates as director or manager.

PAYROLL

- Monthly payslips
- Annual remuneration certificate
- Employee entry formalities
- Employee departure formalities
- Registration/deregistration of companies with social securities
- Packages optimisation
- Specific payroll requests

CORPORATE SECRETARIAT

- Company incorporation
- Company extraordinary decisions
- Liquidation/dissolution
- Company sale
- Board and General Meeting preparation
- Business license requests
- Other license requests



Technology-Enabled Fiduciary Services

Leveraging Odoo & Silverfin

At C.R.E.W. Luxembourg, we provide our clients with access to **Odoo** & **Silverfin**, leading digital software's for accounting and document management, including the preparation of Financial reports (e.g. management accounts) and Corporate Secretarial.

This powerful yet intuitive combination of tools ensures that you're accounting, and central administration are efficient, secure, and fully compliant with Luxembourg standards.

It allows you to **monitor the status and progress** of each task.

<https://crew-luxembourg.odoo.com/technology-enabled-fiduciary-services>

The Odoo logo is displayed in white lowercase letters on a purple background. The letters are rounded and have a slight shadow effect.The Silverfin logo consists of a stylized 'S' icon on the left, composed of two overlapping circles in shades of blue and teal. To the right of the icon, the word 'silverfin' is written in a bold, dark blue, lowercase sans-serif font.

We assist you all along your investment journey

PRE-IMPLEMENTATION PHASE

Harnessing our extensive experience and profound knowledge of alternative investments and private wealth structures, we embark on a collaborative journey where, together, we meticulously sculpt your project's framework, define a strategic blueprint, and identify the global array of stakeholders essential to its success.

1

2

IMPLEMENTATION PHASE

Throughout the entire implementation phase, we stand by your side, ensuring that the most suitable investment structure is seamlessly put into action, adhering to the highest standards of practice.

We tend to provide directly the services when we can, and we coordinate where we need.

3

ONGOING MANAGEMENT & ADMINISTRATION

Once your investment structure or product is set in motion, we commit to its efficient management and vigilant monitoring.

Our dedication extends to providing bundle services, including: accounting, tax advisory & compliance, transactional support and offering strategic guidance for corporate governance enhancements whenever necessary.

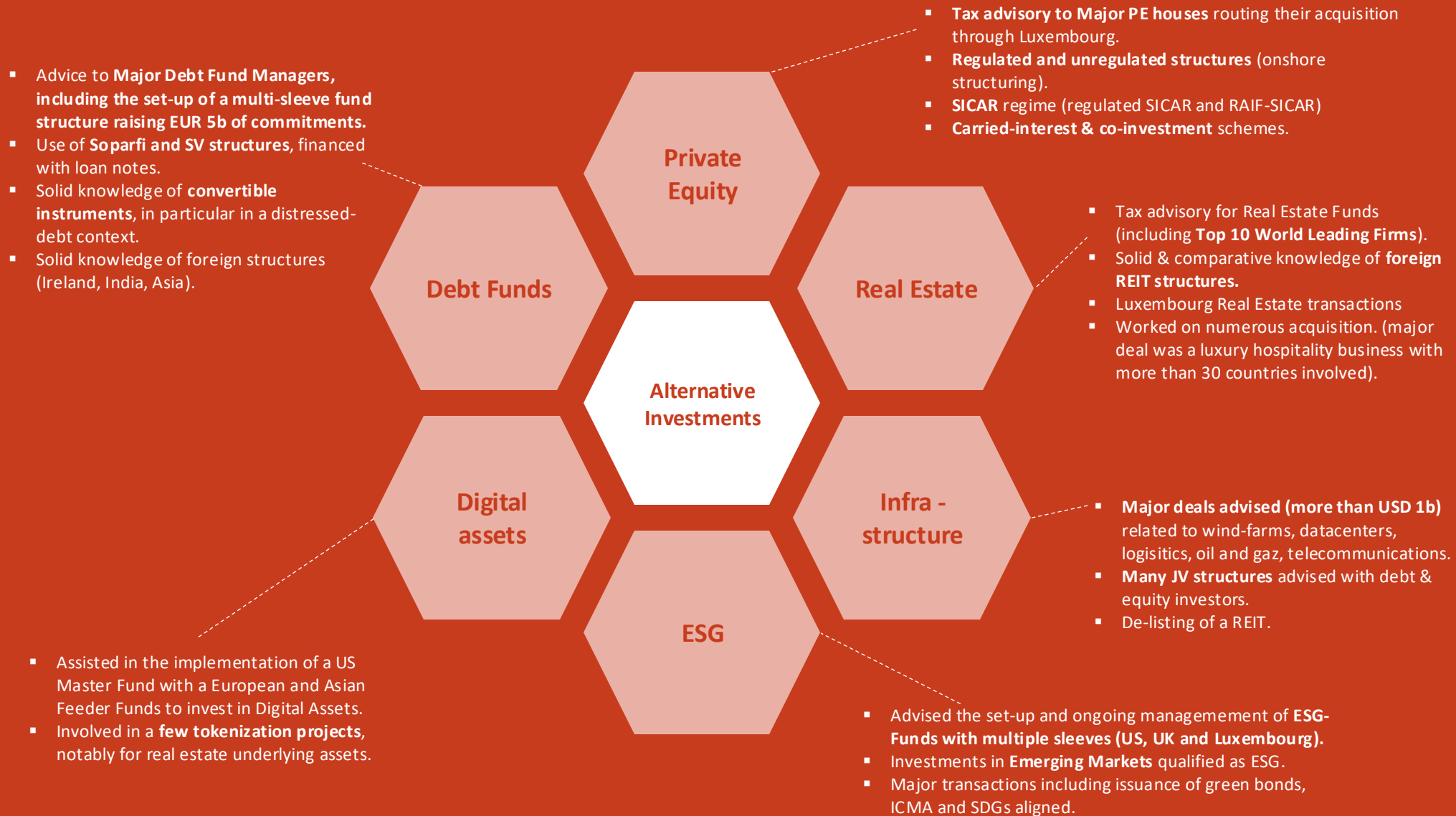
Ensuring a robust substance and daily management is our mandate, and aligning seamlessly with the esteemed guidelines set forth by the Organization for Economic Cooperation and Development (OECD) is key to stand the test of time.

EXIT

4

With the same commitment at inception, we stay by your side through the whole unwinding of the structure and we will always keep an independent eye.

We dive into a Diverse Asset Class Expertise



In « Quality, Confidentiality & Independence » We Trust

QUALITY



Our firm is committed to delivering **unparalleled quality in every aspect of our accounting and tax services**. We strive for excellence in all our endeavors, employing a team of **highly skilled professionals** who bring their expertise to every client engagement. Our dedication to quality ensures **accuracy, precision, and reliability** in our corporate solutions, providing you with the peace of mind that your financial matters are in capable hands. With our unwavering commitment to quality, **we aim to exceed your expectations and help you achieve your financial goals with confidence.**

CONFIDENTIALITY



At our firm, **confidentiality is paramount**. We understand the **sensitive nature of financial information and the importance of safeguarding your data**. Our rigorous confidentiality protocols and adherence to industry standards ensure that your financial details are kept strictly confidential. You can trust us to maintain the **highest levels of discretion and security, ensuring that your privacy, and the one of your own client, is respected at all times**. Rest assured that your information is in safe hands with our team, and we take the utmost care to protect your confidentiality and uphold your trust.

INDEPENDENCE



Independence is a core principle that defines our firm's approach to providing accounting and tax services. **We operate without any conflicts of interest, ensuring that our recommendations and decisions are solely based on your best interests.** Our independence guarantees that you receive objective and unbiased advice, free from any external influences. We are dedicated to maintaining our independence to preserve the integrity of our services and to serve as your trusted financial advisor, always acting in your favor.

Our Key Differentiators and Value Proposition

All in all, why would you choose **C.R.E.W. LUXEMBOURG** to set-up and manage your Luxembourg investment platform?

- **Best-in-class technical expertise:** that is certainly a primary criterion, being reassured that you are served by professionals having an extended and deep knowledge of all types of investment structures.
- **A qualitative experience:** Our role models are certainly the same as yours, i.e. the highest quality provided by Big4 firms, renowned Law Firms, and deep knowledge of certain key decision-makers, but not accessible to all. This is precisely the same standard of expertise that we embedded in our boutique firm.
- **A particular care and attention:** many service providers can technically do the work, but all what matters is the willingness to make every client relationship an exclusive and remarkable relationship. All what matters to us is your satisfaction.
- **Solid back-ups:** even structured as a boutique firm, we have sufficient back-ups in all functions to ensure your business activities are run smoothly, seamlessly and efficiently.
- **Competitive fees:** we ensure that we are competitive in every Request for Proposal (RfP). This competitiveness stems from our status as a boutique firm, enabling us to offer tailored services and efficient solutions.



Our Professional biographies.

“At C.R.E.W. Luxembourg, We don't follow standards. We forge them.”



Our Professional Biographies

Patrice Gallasin

Founder & Partner CREW – Expert-Comptable



Patrice Gallasin is a seasoned professional in the domiciliation and fiduciary sector with over two decades of experience, particularly in managing complex structures such as private equity and real estate funds.

He holds a Master in Law specializing in tax and corporate law from the University of Reims, as well as an MBA from Groupe ESC Reims in France, providing a strong legal and financial foundation for his career.

Patrice began his career in Luxembourg at Benelux Trust (Luxembourg) S.à r.l., where he served as Legal Counsel and Head of the Accounting Department from 2001 to 2007, advising on legal and tax matters and holding directorship roles in several companies. He later joined P.A.L. Services (Luxembourg) S.à r.l., where he was Manager and Head of the Accounting Department from 2007 to 2009, overseeing corporate services for international clients and managing legal and accounting restructurings of company groups.

Since 2009, Patrice has been Managing Director at ONE Luxembourg S.A. & One Dom S.à r.l. where he provides fiduciary and compliance services, supports the implementation and restructuring of international company structures, and continues to serve as director in several Luxembourg companies.

During his time as a chartered accountant, Patrice mentored the launch of several accounting firms, including Lemon Three Services, The BOARD Luxembourg, and CREW Luxembourg.

Patrice is a registered member of the Ordre des Experts-Comptables (OEC) in Luxembourg and is a native French speaker; Patrice is also fluent in English and Italian.

François Ball

Founder & Partner CREW – Expert-Comptable
Alternative Investments | Private Wealth &
Family Offices



François Ball is a finance professional and entrepreneur with expertise in accounting, financial reporting, and international investment structuring.

He holds a Bachelor's degree in French-German Business Management from CCI Campus Alsace, followed by a Master degree in finance at SRH University Berlin, Tongji University in Shanghai and OMNES Education Paris. He later continued his studies at the University of Luxembourg to become a chartered accountant (OEC).

François began his career at PwC Luxembourg, where he progressed from Associate to Senior Auditor, specializing in private equity structures including RAIFFs and other non-regulated investment vehicles. He worked closely with major German clients and private equity firms, gaining strong expertise in the investment fund industry and complex financial instruments.

He later joined Oaktree Capital Management as Financial Controller and Manager, overseeing the financial and tax reporting of numerous Special Purpose Vehicles (SPVs) across multiple asset classes.

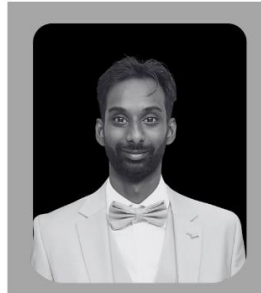
In parallel, he demonstrated entrepreneurial leadership by building and developing an office in Oran from the ground up, where he continues to lead operations with a hands-on approach.

François is a registered member of the Ordre des Experts-Comptables (OEC) in Luxembourg and is fluent in French, English, and German, working with clients across investment, financial services, and sports sectors.

Our Professional Biographies

Thierry-Vimal Ravindirane

Senior Accounting Manager
Audit, Alternative investments and Real
Estate Structures



Thierry-Vimal is a finance professional with strong expertise in accounting, audit, financial reporting and investment structuring.

He holds a Bachelor's degree in Business Administration from the Law School of Strasbourg, as well as a Master's degree in Financial and Operational Audit from EM Business School in Strasbourg.

He began his career as an auditor at PwC Luxembourg, where he gained broad experience across Private Equity, Real Estate, Securitization, and operational companies.

He later joined Oaktree Capital Management as a Financial Controller, overseeing a portfolio of Luxembourg-based SPVs. In this role, he developed extensive expertise in Private Equity, Real Estate, debt structures, and trading entities. During this time, Thierry-Vimal was responsible for end-to-end financial management, including accounting, cash management, and all related operational and reporting activities for his portfolio.

He is fluent in French, German, English, and Tamil, enabling him to operate effectively in international and multicultural environments.



Thank You !

C.R.E.W. Luxembourg

Compliance, Reporting, Estate & Wealth

Email: contact@crewluxembourg.com

Phone: +352 661 676 706